



Bluebay Gas Barrier System

providing Complete protection against Radon, Methane & Carbon dioxide



Bluebay Gas Barrier System

Why the need for Gas protection?

Building Regulations (Approved Document C) require the necessary precautions are taken to ensure that the occupants of buildings must be protected against harm from gases which occur in the ground and may seep into the building through cracks and gaps in the structure, eventually rising to harmful levels.

The Solution

Bluebay Gas Barrier offers total protection from methane and carbon dioxide when designed and installed in accordance with BRE Report Part 212 (Methane) & Part 414 (Housing on contaminated sites).

Bluebay Gas Barrier is also a fully effective damp proof membrane.



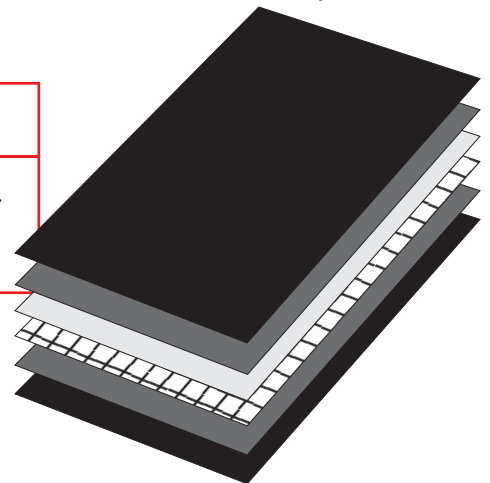
Product Features

- 6 Layer product designed for maximum gas protection
- Polyester reinforcing grid for puncture resistance during installation
- Loose laid system for ease of application
- Can be used on ground bearing floors or on suspended concrete or beam & block floors.
- Can be used to form a cavity tray, eradicating the need for a separate product.

Product Specification

Bluebay Gas Barrier is a six layer, reinforced, totally gas impermeable membrane comprising an aluminium foil layer and a polyester reinforcing grid sandwiched between four layers of polyolefins.

Gas Barrier	Robustness	DPM	Radon	Methane	CO ₂
A six-layer gas barrier, consisting of aluminium foil and a reinforcing polyester grid, sandwiched between four layers of polyolefins	✓	✓	✓	✓	✓
Mean sheet thickness (mm)	0.413				
Standard roll width (m)	2				
Standard roll length (m)	25; 50				
Standard roll weight (m)	22, 44				
Colour	Black				



A comprehensive installation guide is available upon request.

Bluebay West & Wales
Unit 51 Portmanmoor Rd Ind Est.,
Ocean Park, Cardiff, CF24 5HB

☎ 029 20 495555

☎ 029 20 491700

✉ cardiff@bluebaybp.co.uk

Bluebay Thames Valley
Unit 11 Birch, Kembrey Park,
Swindon, Wilts, SN2 8UU

☎ 01793 512299

☎ 01793 535888

✉ swindon@bluebaybp.co.uk

Bluebay London
Unit 3, Stadium Ind Est, Cradock Road,
Luton, Bedfordshire, LU4 0JF

☎ 01582 594007

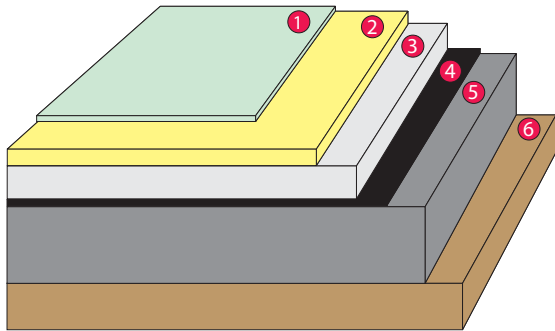
☎ 01582 594009

✉ london@bluebaybp.co.uk

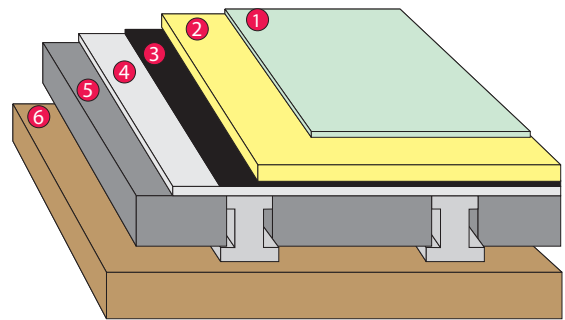


The sequence for installing Bluebay Gas Barrier within Groundbearing floors is:

1. Install gas permeable layer and blind with sand to a smooth surface.
2. Lay the Bluebay Gas barrier on the sand, lapping adjoining sheets by 150mm
3. Seal the edge of the upper sheet with double sided butyl jointing tape across side lap.
4. Pour the floor slab.



Groundbearing Floor



Suspended Floor

- 1 Floor Finish
- 2 Levelling Compound (available from Bluebay)
- 3 Concrete Slab
- 4 Bluebay Gas Barrier Membrane
- 5 Granular layer with sand blinding
- 6 Ground

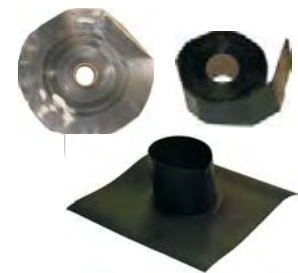
- 1 Floor Finish
- 2 Levelling Compound (available from Bluebay)
- 3 Bluebay Gas Barrier Membrane
- 4 Levelling Compound
- 5 Suspended concrete/beam & block floor
- 6 Ground

Technical Specifications

Test	Method	Bluebay Gas Barrier	
Radon permeability (m ² /s)	SP Swedish National Testing and Research Institute	0.5 x 10 ⁻¹²	
Radon transmission (m/s)	SP Swedish National Testing and Research Institute	1 x 10 ⁻⁹	
Methane permeation (g/m ² /24h)	BR 212	0	
MVTR (25°C 75% RH) (g/m ² /24h)	BS 31177: 1959 (1995)	0	
		Long	Transverse
Tensile strength unaged (Mpa)	IS EN ISO 527-3: 1996	382	388
Tensile strength UV aged (Mpa)	IS EN ISO 527-3: 1996	407	403
Elongation unaged (%)	IS EN ISO 527-3: 1996	18.1	19.5
Nail tear resistance unaged (N/mm)	MOAT 27: 1983 (5.4.1)	219	221
Low temp. flexibility 0°C	MOAT 27: 1983 (5.4.2)	25 no damage	25 no damage
Resistance to leakage at joints	MOAT 27: 1983 (5.2.1)	No leaks	
Shear at joints (N)	MOAT 27: 1983 (5.2.2)	253	

Roll Sizes & Weights

	Bluebay Radon Barrier	Bluebay Gas Barrier
Thickness (mm)	0.3	0.413
Roll width (m)	4	2
Roll length (m)	25	25; 50
Roll weight (kg)	30	22; 44
Colour	Red	Black



Bluebay Gas Barrier System Components

Product	Description	Sizes	Application	Supply
Gas Barrier Foil Backed Jointing Tape	A single sided jointing tape suitable for securing laps and joints	75mm	Suitable for securing laps and joints	50m Rolls
Double sided Bitumen Tape	Bitumen Adhesive Tape	Various	Butyl based double sided tape for joints and laps	Rolls
Bluebay Top Hats	MDPE Sheeting containing an aluminium foil layer	Various	For sealing around penetrations through gas membrane	Each
Gas Resistant DPC	A flexible polyethylene DPC with an aluminium foil	All Widths	To prevent the transmission of Radon & Methane gases	20m Rolls
Gas Ventillation System	Geocomposite HDPE drainage sheet with polypropylene filter	10mm thick or 20mm thick	Used to route gasses away from the structure.	1.1m x 25m rolls
Gas Resistant Self Adhesive Membrane	A tough, durable, self-adhesive sheet with a thickness of 1.0 mm.	1mm x 1.05m	Self-adhesive membrane which protects against methane & Radon gasses.	30m ²