

VISQUEEN VAPOUR BARRIERS

Visqueen Vapour Barrier is used to omit the risk of interstitial condensation within a structure as well as improving the general airtightness of the building. Visqueen Vapour Barrier restricts the passage of warm, moist air from within the building from permeating into the structure or the roof.

Visqueen Vapour Barrier should be installed on the "warm" side of the insulated structure, with special care being taken to ensure that all seams and holes are sealed effectively - thus rendering the whole structure moisture vapour proof and improving thermal performance. It is important that Visqueen Vapour Barrier should be continuous in order to prevent vapour entering the wall or the roof.

Visqueen Vapour Barrier is manufactured to NHBC standard (Clause 6.2) using virgin polyethylene

Technical Data	
Dimensions	
Width	2.45m or 4m
Length	50m
Thickness	125mu (500guage)
Weight	14Kg (2.45m), 23Kg (4m)
Colour	Green Tint

Features & Benefits

- General Purpose VCL suitable for preventing condensation which can lower the performance of insulation
- Suitable for wall and roof applications
- Vapour resistance greater than 200 MNSG
- Helps to prevent Mould and Damp Staining

EASIPOINT Brickwork Pointing Mortar

EasiPoint Standard is Portland cement based mortar designed to provide a non-shrink, water-resistant gun-injected mortar, suitable for all applications involving sound brickwork or masonry.

It gives a highly durable finish offering high levels of resistance in exposed situations, including areas subject to wind driven rain and sea spay or high level buildings in harsh climates.



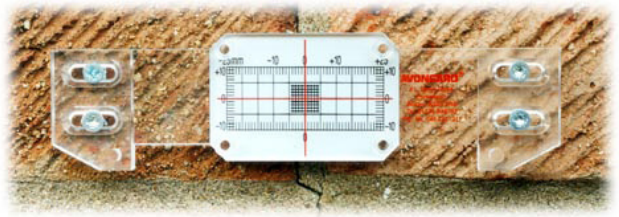
Technical Data	
Joint Width s	5mm - 15mm (max 25mm)
Useable Life	45 minutes
Initial Set	2 ½ hours
Yield	14 Litres per 25kg Bag
Meets DpT Specification 2601	

Bluebay Tell Tales (Brickwork Monitoring)



It is essential that products used for monitoring changes in crack width are quality precision instruments. Great reliance is placed on the results of the monitoring and the user may be liable if inappropriate remedial work is recommended based on the results of imitation products of inconsistent quality.

All the Tell-Tale products are the original and genuine crack monitoring gauges and are all manufactured to conform to BS EN ISO 9002: 1994.

- Suitable for internal and external use
- Record sheets supplied with each Tell-Tale
- Calibrated in millimetres
- Manufactured in vandal resistant polycarbonate (Plus) or acrylic (Standard)



Brick Admixtures & Cleaning

Manufacturer	Product	Description	Pack Size	Yield
 The Chemical Company	Febmix	FEBMIX ADMIX is a liquid, air entraining mortar plasticiser that replaces lime or supplements in the mix and reduces the amount of water required to achieve the desired workability.	5 / 25 / 205 Litres	FEBMIX is added at 280 to 560 ml per 100 Kg of cement
	Febmix DH	FEBMIX DH is a mortar plasticiser in powder form for use as an alternative to lime or as a supplement to lime to aid mortar durability. Complies with BS 4887: Pt1	Sachets	FEBMIX DH is added at the rate of 30-60 g per 100 Kg of cement
 Building Chemicals Limited	Adoclean	Acidic Brick Cleaner, concrete surface etcher and rust remover.	5 / 25 Litres	N/A