

VISQUEEN GAS BARRIER

Visqueen Gas Barrier is a multi layer reinforced polyethylene membrane with an integral aluminium foil. For ease of identification on site Visqueen Gas Barrier is coloured blue tint on one side and silver on the reverse.



The Barrier is flexible and is easy to install. Visqueen Gas Barrier is also suitable for use as a damp proof membrane.

Advantages

- Multi Layer Reinforced LDPE Membrane with Aluminium core.
- High resistance to puncture.
- Low permeability to methane, radon and carbon dioxide.
- Also acts as a damp proof membrane.
- High levels of tear and impact resistance

Technical Data

Product	Size
Roll Width	1.6m
Roll Length	30 & 60m
Roll Weight (m ²)	350gsm

VISQUEEN RADON MEMBRANE

Independently Accredited by BRE Certification Ltd (Certificate Number 083/01) Visqueen Radon Membrane is an unreinforced polyethylene membrane, suitable for use in the protection of buildings from the ingress of Radon gas.



Visqueen Radon Membrane will act as an effective passive radon membrane in most typical applications when installed in accordance with our instructions and will also act as a Damp Proof Membrane.

Advantages

- Accredited by BRE Certification Ltd
- Prevents the ingress of Radon gas
- High resistance to puncturing & tearing

Technical Data

Product	Size
Roll Width	4.0m
Roll Length	25.0m
Roll Weight	27.6kg

VISQUEEN CO2 GAS MEMBRANE

Visqueen CO2 Gas membrane offers a safe solution for the protection of buildings against carbon dioxide, when installed in accordance with BRE Report: 414 "Construction of buildings on gas contaminated land".



Visqueen CO2 is a high quality blended co-polymer membrane; for ease of identification on site the membrane is coloured yellow. The Barrier is flexible and is easy to install, and is also suitable for use as a damp proof membrane.

Advantages

- High quality robust Polyethylene based Membrane
- High resistance to puncture
- Low permeability to carbon dioxide

Technical Data

Product	Size
Roll Width	4.0m
Roll Length	25.0m
Roll Weight	27.6kg

VISQUEEN GAS SAM

Visqueen Gas Resistant (GR) Self Adhesive Membrane is designed to prevent the transmission of carbon dioxide, radon and methane gases in tanking applications or where hydrostatic pressure is present. This is in addition to the products usage as a damp proof membrane.



Resistance to gas is achieved by an integral aluminium film. Visqueen Gas Resistant (GR) Self Adhesive Membrane should be used along with Visqueen Tanking Primer Solution, providing the optimum surface to receive the (GR) Self Adhesive Membrane.

Advantages

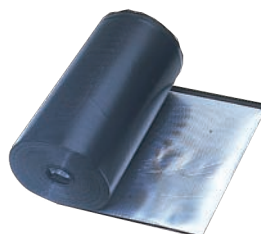
- Part of the Visqueen Gas Barrier system.
- Integral aluminium foil for Gas resistance.
- Tough HDPE polyethylene membrane provides resistance to puncture and tearing.

Technical Data

Product	Size
Roll Width	1.0m
Roll Length	20m
Roll Weight	26kg

VISQUEEN GR DPC

Visqueen Gas Resistant (GR) Damp Proof Course is a flexible polyethylene DPC with an aluminium foil designed to prevent the transmission of carbon dioxide, radon and methane gases.



This is in addition to the products usage as a damp proof course. Resistance to carbon dioxide, radon and methane is achieved by an integral aluminium film.

Advantages

- Integral aluminium foil for gas resistance.
- Easy to apply using traditional methods.
- Use with Visqueen Gas Resistant (GR) Membrane for complete integrity.

Technical Data

Product	Size
Roll Width	0.3 - 1.0m
Roll Length	30m
Roll Weight (m ²)	0.5kg

VISQUEEN RADON SUMP

Visqueen Radon Sumps are for use in full protection areas, where sub floor depressurisation may be required. A sump is only installed initially as a fall back measure and does not offer radon removal until a fan is installed or it is connected to a passive stack system.



Applications

- Strong & Robust
- Easy to Install
- Part of the Visqueen Radon Protection
- System Independently assessed

Technical Data

Product	Size
Radon Sump Unit	430 x 430 x 220mm

VISQUEEN TOPHAT UNITS

Visqueen Top Hat Units are used to provide an effective seal around service pipe penetrations. They are available in a range of sizes.



Applications

- Provides effective seal around service pipe penetrations

Technical Data

Product	Size
Top Hats	110 & 160mm

VISQUEEN GAS JOINTING SYSTEM

Visqueen Gas Barrier Jointing Tape is a double sided butyl based jointing tape. The use of a single release paper assists ease of application on site.

Visqueen Gas Barrier Jointing Tape is suitable for use in the lapping and sealing of Visqueen Gas Barrier.

This tape is a single sided tape which provides added security against any potential leakage path. Always ensure that the membrane is clean and dry at the time of installation.



Applications

- A comprehensive system for ensuring integrity of Visqueen Gas Barrier laps and joins
- Visqueen Double Sided Jointing Tape for sealing laps.
- Visqueen Foil Backed Girth Jointing Tape for added security.
- Visqueen Top Hat Units where Visqueen Gas Barrier is punctured by service pipes.

Technical Data

Product	Size
Dbl Sided Jointing Tape	10m x 50mm
Foil Backed Girth Tape	50m x 75mm



Proofex Total

High performance, totally gas-impervious, reinforced membrane

Reinforced gas membrane designed to protect buildings and their occupants from the effects of methane, radon, carbon dioxide and other harmful gases. Like conventional ground membranes, Proofex Total also acts as a damp proof membrane to help protect the building against the ingress of moisture from the ground.



Advantages

- Independently certified performance, BBA certificate no.01/3850.
- 6-layer product design for maximum gas protection.
- Polyester reinforcing grid for puncture resistance during application.
- Loose-laid system for ease of application.
- Can be used on ground-bearing concrete floors and beam/block floors.
- Can be used to form a cavity tray, no need for a separate product.



Technical Data

Product	Size
Roll Width (m)	2.0
Roll Length (m)	25
Roll Weight (kg)	22



Proofex Radon Barrier

High performance, gas-impervious, reinforced membrane

Gas membrane designed to protect buildings and their occupants from the effects of radon, carbon dioxide and other harmful gases. Like conventional ground membranes, Proofex Radon Barrier also acts as a damp-proof membrane to help protect the building against the ingress of moisture from the ground.

Applications

- Virgin co-polymer product design for maximum gas protection.
- Loose-laid system for ease of application.
- Can be used on ground-bearing concrete floors and beam/block floors.



Technical Data

Product	Size
Roll Width (m)	4.0
Roll Length (m)	20
Roll Weight (kg)	28.48