

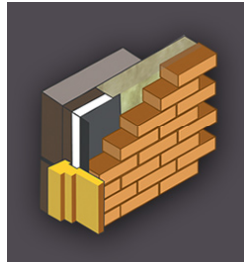
Bluebay Insulated Damp Proof Courses

Insulated Damp Proof Course

The Bluebay Insulated DPC is a polyethylene insulated DPC which has been developed to close masonry cavities for thermal applications.

The primary reason for fitting the Bluebay Insulated DPC is to close off cavities around window and doors preventing cold bridging. Can easily be installed as the brick and block work progresses where a traditional block return is used.

Non standard sizes available on request



Technical Data - Standard Dimensions

Polyethylene Insulation	Polyethylene DPC
17mm x 100mm x 10m coil	165mm width x 10 metre coil.
17mm x 140mm x 10m coil	225mm width x 10 metre coil.

Advantages

- Closes off cavities when a block return is used
- Easy to install
- Exceeds the minimum requirement of 0.45 m² K/M provided the window is set back 30mm from the inner face of the outer brickwork
- Prevents cold bridging
- Manufactured to NHBC standards

Bluebay Rockfibre FR Insulated DPC

Rockfibre is a rock core insulation bonded to DPC (BS6515), closes off cavities around windows and doors preventing cold bridging. Rockfibre has a 4 hour fire integrity.



Technical Data - Standard Dimensions

DPC Width	Length	Thickness	Pack
165mm	1.2m strips	25mm	20
225mm	1.2m strips	25mm	20

TDI Damcor - Insulated Damp Proof Course

DAMCOR is designed to prevent the problem of cold bridging around window and door openings in traditional cavity constructions. At these points in the structure, condensation with possible consequential staining and mould growth, can occur at the reveals due to the lack of insulation where the cavity is closed.

DAMCOR is available in various widths, the standard product is 165mm DPC bonded to 100mm EPS installed as traditional DPC. No special fixings or installation techniques are necessary. The product can be rolled or folded. It is easily cut with a knife or trowel, and can be lap-jointed with no loss of thermal efficiency. No material need ever be wasted.



Technical Data - Standard Dimensions

Width	Length	Thickness	Pack
165 x 100mm	6m	18mm	8
225 x 150mm	6m	18mm	6

Advantages

- Complies to Building Regulations
- Flexible, is supplied in rolls
- No special fixings / installation techniques
- Easy to build as brickwork proceeds
- Easily cut with trowel or knife
- Lengths lapped with no loss of thermal efficiency
- Supplied in various widths and thicknesses
- Light and robust & economical
- CFC and HFC free and energy efficient

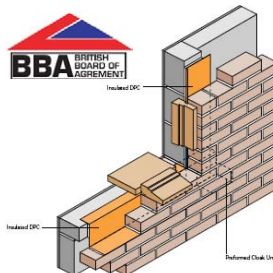
RUBEROID Ruberclose / FR DPC

Ruberoid Ruberclose Insulated DPC is a high performance DPC laminated to cross-linked polyethylene foam insulation. Ruberclose will minimise cold bridging when used within closing structure in masonry cavity walls around openings.

The use of insulated DPC enables the cavity to be closed in the traditional way, while conforming to the requirements of Building Regulations - Approved Document L and new Robust Details Document.

Ruberclose is specifically designed for application at window and door locations. It is suitable for use where a block, brick or concrete closer is used.

Ruberclose may also be used to insulate and waterproof structural interfaces where for example, an internal wall meets an external wall and a cold bridge exists.



Technical Data Ruberclose

	Ruberclose 165	Ruberclose 180	Ruberclose 225
Roll length	8 metre	8 metre	8 metre
Insulation length	8 metre	8 metre	8 metre
Roll width	165 mm	180 mm	225mm
Insulation width	100 mm	100 mm	140 mm
Insulation thickness	17 mm	17 mm	17 mm

Advantages

- Superior thermal resistance
- BBA Approval, Agrément Certificate No. 97/3310
- Flexible HP DPC superior to polyethylene DPC
- Insulation remains flexible when bent, will not crack
- Uniformly maintains thermal properties and does not allow thermal leakage
- Exceptionally easy to handle
- Special sizes available

Ruberclose FR - Fire Rated Insulated DPC

Hyload FR Insulated DPC meets building regulations where fire resistance is a requirement, achieving a minimum of 30 minutes resistance.

Safe and easy to install, it has been developed to minimise cold bridging when closing masonry cavity walls around openings in line with current and proposed fire regulations.

Technical Data Ruberclose FR - 1.3m Length Strips

DPC width	Insulation Size	Units per pack	Selvedge width
165mm	100 x 20mm	10 lengths	32.5 mm
180mm	100 x 20mm	10 lengths	40 mm
225mm	140 x 20mm	10 lengths	42.5 mm