

Ancon  
Building Products

## Channel Systems

A wide range of suitable ties are available, please ask when specifying channel type

### 21/18 Omega c/w infill

	Length
	100mm
	3000mm

### 28/15 c/w anchors & infill

	Length
	100mm
	150mm
	200mm
	3000mm

### 38/17 c/w anchors & infill

	Length
	100mm
	150mm
	200mm
	3000mm

### 30/20 c/w anchors & infill

	Length
	100mm
	150mm
	200mm
	3000mm

### 28/15 Fastrack (excl SD28 tie)

	Length
	100mm
	150mm
	200mm
	3000mm

### Anconlock

	Length
	100mm
	150mm
	200mm
	3000mm

## Channel Systems

### Steel Frame Channel

	Length
	2700mm

### Dove Tail Slot Channel

	Length
	100mm
	150mm
	3000mm

### Dove Tail Safety Tie

	Sizes
	75-300mm

This tie to be used with all Bluebay channel systems and Vista V29 slot to restrain brickwork

### 28/15 Slotted Back Channel

	Length
	100mm
	150mm
	3000mm

### 28/15 Tanged Back Channel

	Length
	100mm
	150mm
	3000mm

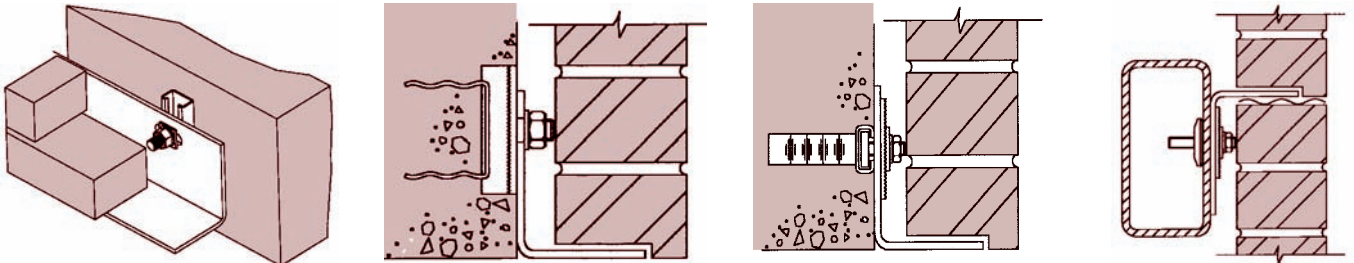
### 28/15 Plain Back Channel

	Length
	100mm
	150mm
	3000mm

## Brickwork Support System

We offer a full design and supply service for a full range of Brickwork Support, Lintel and Windpost systems.

### Brick Angle Support System



### Brickwork Bracket Angle Support System

