



## ***Formwork Products***

Tie Bar System	55
Formwork Accessories	56
BAYFORM Permanent Shuttering	57
Rapidobat Column Formers	57
Adomast Formwork Chemicals	58-59
Specialist Formwork Systems	60



## Formwork Tie Rod System

Tie Rod threaded bars are hot rolled in the steel mill and come with thread-like deformed ribs over the entire length of the bar. The bar can be cut anywhere and is instantly threadable without further preparation.

### Tie Rod Bar



Diameter	Strength (kn)	Length
15mm	180	1.5 / 6m
20mm	210	1.5 / 6m
26.5mm	520	6.0m
32mm	844	-
36mm	1070	-

### Tie Rod Wing Nuts



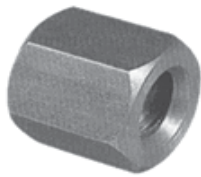
Diameter	Pack size
15mm	100
20mm	50
26.5mm	Each
32mm	Each
36mm	Each

### Tie Rod Waler Plate



Diameter	Size (mm)
15mm	120 x 120 x 10mm
20mm	120 x 120 x 20mm
26.5mm	130 x 130 x 35mm
32mm	160 x 160 x 40mm

### Hex Nuts



Diameter	Size
15mm	30 x 50mm
20mm	36 x 60mm
26.5mm	46 x 120mm

### Connector



Diameter	Size
15mm	30 x 105mm
20mm	40 x 130mm
26.5mm	50 x 150mm

### Waterstop Connectors



Diameter	Type
15 x 110mm	Flanged / Ribbed
20 x 130mm	Flanged
26.5mm	Flanged

### Flanged Nuts



Int Diameter	Ext Diameter
15mm	70 / 100 / 130mm

### Rock Anchors



Size	Length
15mm	130mm
20mm	125mm

### Weldable Anchors



Diameter	Size
15mm	130 x 50mm

### Rigid Plastic Tube



Size (Int /Ext Dia)	Pack Size
22/26mm	100
20/24mm	50
26/30mm	50

### Plastic Cones



Size	Pack Size
20mm	500
22mm	500
26mm	250

### Rubber Stoppers



Size	Pack Size
20mm	500
22mm	500
26mm	250

## Formwork Accessories

### Plastic Stoppers



Size	Pack
20 / 22 / 26mm	1000
32mm	500
40mm	250

### Plastic Kickers



Size	Pack
11 / 15 / 20mm	100
25 / 30mm	50

### Tie Bar Hole Filler



ADOPLUG is a polymer modified cementitious powder specifically designed for plugging tie holes.

Size	Yield
2kg tub	1 Litre

### Chamfer / Edge Profiles



Plastic profiles used to produce Chamfered corners in formwork with or without nail flange.

Size
25mm x 2.5m (flanged)
25mm x 2.5m (Column)

### PVC formwork Tape



A PVC groutcheck formwork tape with high tensile strength, matt finish, oil and damp tolerant. For sealing joints on formwork to prevent grout loss

Size
50mm x 33m
75mm x 33m

### Groutcheck Foam Tape



A foam groutcheck tape which provides a tight seal to butt joints in formwork that are unable to be sealed with PVC Groutcheck Tape.

Width	Length	Box Qty
12 x 6mm	10m	25
24 x 12mm	10m	12

### Nails



Round wire nails, also available, Bright Ovals (40mm) for fixing plastic chamfer. All nails manufactured to BS 1202.

Nail Size	Pack
50 / 65 / 75 / 100 & 150mm	25kg box
40mm Ovals	25kg box
65mm Ring Shank	25kg box

### Through Bolts



Removable anchor for bolting down props onto concrete. Simple to use. They are removable and reusable.

Size
Various Sizes Available

### Formwork Silicon Sealants & Foams

A high modulus clear silicone sealant which can be used for filling movement joints in formwork.

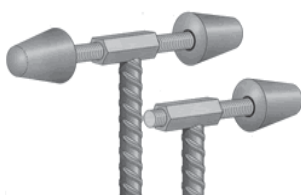


High quality polyurethane foam for filling gaps in formwork



Size
Silicone - 310ml Cartridges
Foam - 750ml Cans

### Adjustable Steel Kickers

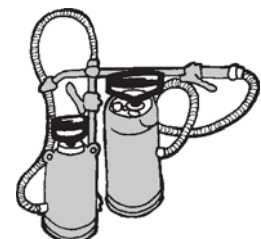


Removes the need to pour a kicker. Spacer/spreader for wall joints. The crimped anchor without threaded bar is pressed into the wet concrete along the approximate centre axis of the subsequent wall.

M16 threaded bar allows exact alignment and ensures high strength. End caps are to be applied firmly to ends of threaded bar, providing a 50mm cover.

Wall Width
150 / 175mm - Single
200 / 225 / 250mm - Double

### Sprayers & Accessories



Description
5L Plastic Sprayer
16L Knapsack Sprayer
7L Metal Sprayer

## BAYFORM Permanent Shuttering Boards & Sheets

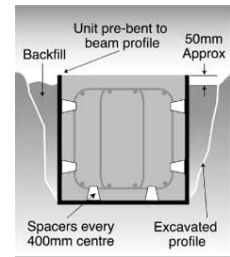
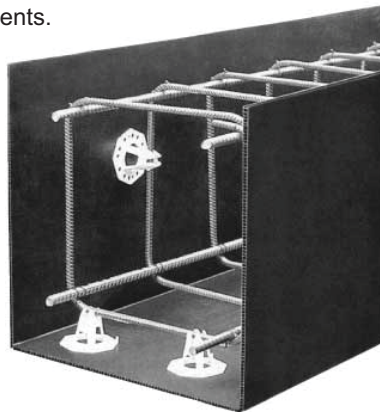
BAYFORM provides the contractor with a rapid and cost effective method of constructing concrete ground beams and pile caps. Manufactured from heavy duty polypropylene in 8mm thickness, the system has many advantages over traditional timber or steel pan construction.

BAYFORM is supplied in three main forms:

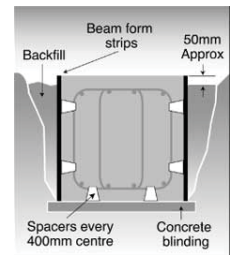
- Standard 4.4m x 2.4m sheets, cut and scored on site by the contractor
- Supplied in cut strips, when using sides only
- Pre-fabricated into U-sections in the factory, to suit site requirements.

### Advantages

- Can be bent to form any ground beam detail
- Requires less excavation than traditional shuttering
- Light but rigid so easily handled
- Can arrive on site tailor made ready for installation
- Supplied flat pack so requires minimal storage space
- Reduces over dig and spoil cartage
- Easily installed and cut to exact dimensions
- Minimises concrete wastage
- No stripping, cleaning or release agents are needed
- Easily adapted to suit services and variations on site.



U-shaped corrugated beam form placed in levelled excavated surface



Strips of corrugated beam form supplied for pile caps, bases or beams and supported on concrete blinding

## Column Formers & Collars

### Disposable Formwork for rapid Construction of Circular Columns



Rapidobat is a purpose made spirally wound rigid paper tube of extremeley high quality. The tube is internally lined with a smooth faced plastic release sheet which provides the ultimate in concrete surface finish and appearance.

Rapidobat is the fast and economical solution to the problems of forming round columns. Complicated with timber formwork and expensive GRP or steel formwork.

Rapidobat is the one use disposable formwork system so the number of columns cast per day is limited only by the number of Rapidobat tubes purchased.

Faster pouring programmes are the result, as well as consistent concrete quality - because all the columns can be potentially derived from the same mix.

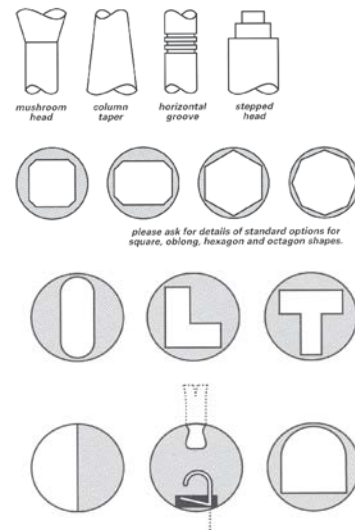
#### Standard Range shapes

Tube Internal Diameter	Tube wall thickness (mm)	Maximum Pour Height (m)
200	4.5	10.25
250 - 300	5.0	10.25
350	5.0	8.79
400	6.0	7.69
450	6.5	6.50
500 - 560	7.0	7.30
600	8.0	6.15
650	8.5	6.00
700	9.5	7.03
750	10.0	7.03
800	10.5	7.69
900	12.0	7.70
1000	13.5	7.65

### Advantages

- Provides the optimum fair face finish concrete column
- Fast and economical to use
- Very Strong
- Light and easy to handle
- Quick and easy to erect
- Requires no mould oil or release agent
- Stripped literally in seconds
- Delivered at short notice
- Manufactured in a large range of sizes
- Can be used for horizontal void forming.

### Special Shapes



please ask for details of standard options for square, oblong, hexagon and octagon shapes.

**Rapidobat®**

## Eco-Friendly Concrete Release, Curing & Sealing Agents



### SAFELEASE - Formwork Release Agent (WRAS Approved)

Uses the latest water soluble polymer technology to produce an environmentally-friendly and highly efficient release agent for concrete formwork on site. Resistant to rainwater wash-off.

Coverage: 20-30m<sup>2</sup> per litre



Size
5 Litre
25 Litre
210 Litre

### SAFESTRIKE - Mould Release Oil (BCA Category 2/5)

Solution of vegetable oils with a blend of fatty acids that provides a stain-free concrete finish of the highest quality with excellent strip. Environmentally-friendly alternative to ADOSTRIKE and ADOLEASE.

Coverage: 30-50m<sup>2</sup> per litre



Size
25 Litre
210 Litre

### SAFECURE STANDARD - Water-Based, Medium Efficiency Curing Compound

A spray-on temporary membrane to retain moisture in freshly placed concrete. Degrades when exposed to ultraviolet light over a period of time. Clean spraying equipment using water

Coverage: 5.5m<sup>2</sup> per litre



Size
25 Litre
210 Litre

### SAFECURE SUPER - Water-Based, High Efficiency Curing Compound

A spray-on temporary membrane to retain moisture in freshly placed concrete. Degrades when exposed to ultraviolet light over a period of time. Clean spraying equipment using water

Coverage: 5.5m<sup>2</sup> per litre



Size
25 Litre
210 Litre

### SAFECURE SEALER - Water-Based, Combined Curing Agent and Sealer

A low odour, membrane-forming liquid for curing, sealing and dustproofing concrete. Suitable for use over new and old concrete. Performs well on both interior and exterior concrete. Clean spraying equipment using water.

Coverage: 6-8m<sup>2</sup> per litre  
(Depending upon surface finish)



Size
5 Litre
25 Litre
210 Litre

### ADOCURE WW & WWT - Water-Based Curing Compounds

Aqueous silicate solution that reacts to deposit an integral layer of high strength crystals in the pore structure. Approved for potable water projects. Low cost general purpose curing. Will not restrict bond of subsequent coatings which are intended for use with concrete. Available in fugitive dye tinted form (WWT) to suit specification and improve visual indication of application.

Coverage: 5.5m<sup>2</sup> per litre



Size
5 Litre
25 Litre
210 Litre

### SAFETARD GEL - Water-Based Concrete Surface Retarder

A transparent, gel type composition, colour tinted to assist application. Formulated to retard the set of fresh concrete. Ideally suited to the production of exposed aggregate finishes or 'keyed' surfaces for construction joints.

Coverage: 3-5m<sup>2</sup> per litre



Size
5 Litre
25 Litre

### SAFETARD LIQUID - Water-Based Concrete Surface Retarder

Spray applied liquid that retards the setting of the top surface of freshly placed concrete. The surface laitance can be brushed/washed away the following day to produce an exposed aggregate finish

Coverage: 5m<sup>2</sup> per litre



Size
5 Litre
25 Litre
210 Litre

## Concrete Formwork Treatments



### ADOLEASE - Concrete Release Agent (BCA Category 5)

Spray applied chemical release agent for all types of impermeable formwork to give a stain-free, superior concrete finish and release. Used where forms are struck after more than 18 hours at ambient temperature. Inhibits corrosion on metal forms and is WRAS Approved for use in potable water schemes

Coverage: 35-50m<sup>2</sup> per litre



#### Size

5 Litre
25 Litre
210 Litre

### ADOLEASE PREMIUM- Concrete Release Agent (BCA Category 5)

Premium grade chemical release agent for use in place of ADOLEASE in confined areas with poor ventilation.

Coverage: 35-50m<sup>2</sup> per litre



#### Size

5 Litre
25 Litre
210 Litre

### ADOSTRIKE- Concrete Mould Oil (BCA Category 2)

A special blend of oils with highly active surfactants that give excellent release with no staining. Can be used on all types of formwork but particularly suitable for sealed or unsealed plywood. Use when early or normal striking times are employed. Produces stain-free surfaces and is WRAS Approved for use in potable water schemes.

Coverage: 20-30m<sup>2</sup> per litre



#### Size

5 Litre
25 Litre
210 Litre

### ADOSTRIP- Contractors Mould Oil (BCA Category 2)

For general site use to achieve easy formwork release. The oil forms a physical barrier between the formwork surface and the concrete. Surfactants help to minimise blowholes. Provides clean, uniform, stain-free surfaces and is WRAS Approved for use in potable water schemes.

Coverage: 20-30m<sup>2</sup> per litre



#### Size

5 Litre
25 Litre
210 Litre

### ADOTARD MF- Mould-applied Concrete Surface Retarder

A latex emulsion paint that adheres to the form face and retards the set of concrete in immediate contact, allowing laitance to be brushed/washed away the following day. Produces an exposed aggregate finish suitable for use as a mechanical key for construction joints or as a decorative feature.

Coverage: 12-15m<sup>2</sup> per litre



#### Size

5 Litre
25 Litre

### EXPOTARD TF- Spray-on Top Face Retarder

Designed for spray application to the top face of horizontally cast concrete. Produces an exposed aggregate finish suitable for keying a construction joint or to enable excellent bonding of subsequent coatings or toppings.

Coverage: 3-5m<sup>2</sup> per litre



#### Size

5 Litre
25 Litre

### ADOWAX - Wax-Based Sealer & Release Agent (BCA Category 7)

A blend of waxes in a hydrocarbon solvent that, when applied to formwork, gives an excellent seal and can be used for release.

Coverage: 10-12 m<sup>2</sup>/Kg for impervious surfaces, 4-6 m<sup>2</sup>/Kg for absorbent / rough surfaces.



#### Size

20 Kg
-------

### ADOFILL - Patch Repair Resin Compound

Two-part polyester filler available in either Natural, Dark Grey (DG) or Dark Teak (DT) versions to suit common formwork colours. Use on wood, fibreglass or metal formwork for repairs to surface damage. Easily worked and sanded. Compatible with release agents.



#### Size

2 Kg
8 Kg

### ADOPLUG - Formwork Filler

Polymer modified, shrinkage compensated premix. Fills holes to give watertight plug. WRAS Approved for use in potable water schemes



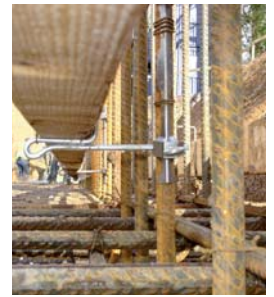
#### Size

1 Litre
4 Litre
8 Litre

## Mc Coys - Kicker Support Bracket

The purpose of the kicker support bracket, is to suspend timber planks off reinforced steel bars to form concrete up-stands. The kicker support bracket commits this traditionally unruly area in reinforcing concrete formwork to a controlled practice. This simplistic bracket easily restores the credibility of this technique and unites the formation of column up-stands with the pouring of the concrete deck which were once separate tasks.

The bracket is non-slip so accuracy and stability is never lost. Its telescopic action controls the area of concrete cover and straightens the alignment of the timbers, with its galvanised rust-proof property also granting durability.

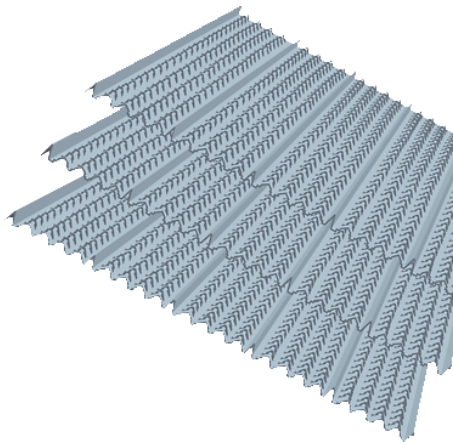


## RIB STOP - Permanent Formwork System

Ribstop expanded metal formwork is specifically designed for concrete construction.

It is produced from Hot Dipped Zinc coated Steel, and features 21mm deep ribs running lengthwise across the sheet.

It can be used for construction joints and stop ends. The construction of the sheet is designed to produce a mechanical key and a strong bond across the joint.



### Advantages

- Time saving - no stripping of formwork
- Allows continuous fixing of reinforcement no preparation of joint surface.
- Easy installation - Cut & Shaped by hand.
- Can be radiused for curved applications
- Lightweight and easy to handle
- Reduces concrete pressure on construction joint
- Reduces the risk of blow-holes or honeycombing

Property	Units	Size
Sheet Width	mm	445
Available lengths	m	2,3
Minimum radius	mm	500

## Speed Edge Formwork System

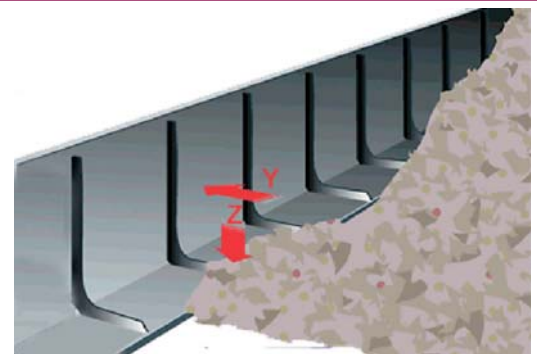
Speed edge formwork is made from galvanised sheet metal and is used for shuttering base and floor slabs.

Corners are easily installed by simply cutting the base of the 2.25m long units.

Type	H (mm)	B (mm)	Units / Pallet
R150	150	120	315m
R175	175	120	315m
R200	200	120	252m
R250	250	155	157m
R300	300	180	135m

### Advantages

- Self supporting
- No additional support
- Fast installation
- No stripping required



The forces of the concrete weight and the formwork pressure are in balance. The only fixing required is nailing to prevent the formwork moving sideways.

## Shutter Strip

Type	H (mm)	Units / Pallet
SF15	150	480m
SF17	175	480m
SF20	200	420m
SF22	225	420m
SF25	250	360m
SF27	275	360m
SF30	300	300m

With Shuttering strips, openings of all sizes in base slabs and concrete floors are quickly installed. Shutter Strips are perforated crosswise every 50mm. The length of opening is a multiplication of this size, i.e. 150 x 150, 200 x 300 etc... The scaled profile ensures proper bond to the concrete.

