

Formwork Tie Rod System

Tie Rod threaded bars are hot rolled in the steel mill and come with thread-like deformed ribs over the entire length of the bar. The bar can be cut anywhere and is instantly threadable without further preparation.

Tie Rod Bar



Diameter	Strength (kn)	Length
15mm	180	1.5 / 6m
20mm	210	1.5 / 6m
26.5mm	520	6.0m
32mm	844	-
36mm	1070	-

Tie Rod Wing Nuts



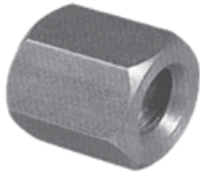
Diameter	Pack size
15mm	100
20mm	50
26.5mm	Each
32mm	Each
36mm	Each

Tie Rod Waler Plate



Diameter	Size (mm)
15mm	120 x 120 x 10mm
20mm	120 x 120 x 20mm
26.5mm	130 x 130 x 35mm
32mm	160 x 160 x 40mm

Hex Nuts



Diameter	Size
15mm	30 x 50mm
20mm	36 x 60mm
26.5mm	46 x 120mm

Connector



Diameter	Size
15mm	30 x 105mm
20mm	40 x 130mm
26.5mm	50 x 150mm

Waterstop Connectors



Diameter	Type
15 x 110mm	Flanged / Ribbed
20 x 130mm	Flanged
26.5mm	Flanged

Flanged Nuts



Int Diameter	Ext Diameter
15mm	70 / 100 / 130mm

Rock Anchors



Size	Length
15mm	130mm
20mm	125mm

Weldable Anchors



Diameter	Size
15mm	130 x 50mm

Rigid Plastic Tube



Size (Int /Ext Dia)	Pack Size
22/26mm	100
20/24mm	50
26/30mm	50

Plastic Cones



Size	Pack Size
20mm	500
22mm	500
26mm	250

Rubber Stoppers



Size	Pack Size
20mm	500
22mm	500
26mm	250

Formwork Accessories

Plastic Stoppers



Size	Pack
20 / 22 / 26mm	1000
32mm	500
40mm	250

Plastic Kickers



Size	Pack
11 / 15 / 20mm	100
25 / 30mm	50

Tie Bar Hole Filler



ADOPLUG is a polymer modified cementitious powder specifically designed for plugging tie holes.

Size	Yield
2kg tub	1 Litre

Chamfer / Edge Profiles



Plastic profiles used to produce Chamfered corners in formwork with or without nail flange.

Size
25mm x 2.5m (flanged)
25mm x 2.5m (Column)

PVC formwork Tape



A PVC groutcheck formwork tape with high tensile strength, matt finish, oil and damp tolerant. For sealing joints on formwork to prevent grout loss

Size
50mm x 33m
75mm x 33m

Groutcheck Foam Tape



A foam groutcheck tape which provides a tight seal to butt joints in formwork that are unable to be sealed with PVC Groutcheck Tape.

Width	Length	Box Qty
12 x 6mm	10m	25
24 x 12mm	10m	12

Nails



Round wire nails, also available, Bright Ovals (40mm) for fixing plastic chamfer. All nails manufactured to BS 1202.

Nail Size	Pack
50 / 65 / 75 / 100 & 150mm	25kg box
40mm Ovals	25kg box
65mm Ring Shank	25kg box

Through Bolts



Removable anchor for bolting down props onto concrete. Simple to use. They are removable and reusable.

Size
Various Sizes Available

Formwork Silicon Sealants & Foams

A high modulus clear silicone sealant which can be used for filling movement joints in formwork.



High quality polyurethane foam for filling gaps in formwork



Size
Silicone - 310ml Cartridges
Foam - 750ml Cans

Adjustable Steel Kickers



Removes the need to pour a kicker. Spacer/spreader for wall joints. The crimped anchor without threaded bar is pressed into the wet concrete along the approximate centre axis of the subsequent wall.

M16 threaded bar allows exact alignment and ensures high strength. End caps are to be applied firmly to ends of threaded bar, providing a 50mm cover.

Wall Width
150 / 175mm - Single
200 / 225 / 250mm - Double

Sprayers & Accessories



Description
5L Plastic Sprayer
16L Knapsack Sprayer
7L Metal Sprayer

Bluebay Permanent Formwork System

Permanent formwork can be used where the final finish is not required as fair faced, the significant reductions in concrete pressure can be utilised to provide economic and fast, wall and column construction.

When concrete is poured behind it, the angled tabs of the mesh become embedded producing a mechanical bond for the next pour. The joint is stronger in bond and shear than a conventional properly prepared scabbled joint. Manufactured from pre-galvanised steel, comprised of mesh areas and ribs.

Awaiting New Product Image

Property	Units	Size
Sheet Width	mm	445
Available lengths	m	2,3
Minimum radius	mm	500

Permenant formwork is considered to be a single use sacrificial material .

Advantages

- Permenant formwork can increase your productivity.
- Achieves significant reductions in the concrete pore/water pressures normally associated with materials such as timber and steel, resulting in a reduction of supports required.
- Eliminates preparation of the joint surface, thus allowing reinforced fixing to continue without a break.
- It is left in place, no stripping of the formwork is necessary.
- Allows pours to be visually monitored thus reducing the risk of voids or honeycombing within the concrete.
- Enables a high rate of rise to be achieved.
- Can be used with ribs running horizontally or vertically, curved and in water retaining structures.

Beamform Shuttering Boards & Sheets

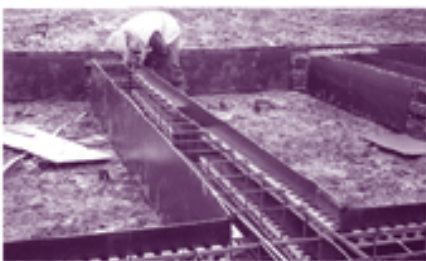
CBF provides the contractor with a rapid and cost effective method of constructing concrete ground beams and pile caps. Manufactured from heavy duty polypropylene in 8mm thickness, the system has many advantages over traditional timber or steel pan construction.

CBF is supplied in three main forms:

- Standard 4.88m x 2.44m sheets which are cut and scored on site by the contractor
- Supplied in cut strips, when using sides only
- Pre-fabricated into U-sections in the factory, to suit individual site requirements.

Advantages

- Can be bent to form any ground beam detail
- Requires less excavation than traditional shuttering
- Light but rigid so easily handled
- Can arrive on site tailor made ready for installation
- Supplied flat pack so requires minimal storage space
- Reduces over dig and spoil cartage
- Easily installed and cut to exact dimensions
- Minimises concrete wastage
- No stripping, cleaning or release agents are needed
- Easily adapted to suit services and variations on site.



Formwork Chemicals - Mould Oils & Release Agents

Bluebay Mould Oil

A contractor's Mould oil for general site use to achieve easy formwork release. The oil forming a physical barrier between the formwork surface and the concrete. Surfactants help to minimise blowholes and provide a clean uniform and non-stained surface.

Coverage: 20-30m² per litre



Size
25 Litre
210 Litre

Adostrike - High Performance Mould oils with surfactants.

A special blend of oils with highly active surfactants that give excellent release with no staining. BCA Category 2. All types of commonly used formwork particularly sealed/unsealed plywood. WBS listed for use in potable water schemes.

Coverage 20-30m² per litre



Size
5 Litre
25 Litre
210 Litre

Adolease - Chemical Release Agent.

A blend of fatty acids in an evaporative carrier which provide a stain free concrete finish of the highest quality with excellent strip. Listed by WBS, for drinking water projects. Spray applied to all types of impermeable formwork to give superior concrete finish and release BCA Category 5. Used where forms are struck after more than 18hrs at ambient temperature. Inhibits corrosion on metal forms. Dries rapidly.

Coverage 35-50m² per litre.



Size
5 Litre
25 Litre
210 Litre

Safelease - Water based mould oil. (Environmentally Friendly)

Uses the latest water soluble polymer technology to produce an environmentally friendly and highly efficient release material for concrete formwork on site. Resistant to rain.

Coverage: 20-30m² per litre



Size
5 Litre
25 Litre
210 Litre

Safe Strike - Mould Release Oil (Environmentally Friendly)

Environmentally safe mould release oil (BCA Category 2/5)
Solution of vegetable oils with a blend of fatty acids that provide a stain free concrete finish of the highest quality with excellent strip. Environmental alternative to both ADOSTRIKE.

Coverage: 30-50m² per litre



Size
25 Litre
210 Litre

Formwork Chemicals - Fillers, Sealers & Retarders

Adowax - Wax based sealer and release agent.

A blend of waxes in a hydrocarbon solvent that when applied to formwork gives an excellent seal and can be used for release. BCA category 7.

Coverage depends upon roughness and porosity.

Adoplug - Formwork Filler.

A polymer modified cementitious powder specifically designed for plugging tie holes. When mixed with water it forms a cohesive easy to apply shrink compensating compound and cures to develop a strongly bonded watertight plug to form an effective seal.

Yield: 2Kg bag yields approx 1 Litres & 8Kg bag yields approx 4 Litres



Size
20kg

Size
2kg tub
8kg tub

Adofill - Polyurethane Formwork Filler.

A twin pack polyester resin based system consisting of a tin of resin paste and a tube of hardener. This rapid setting compound has the physical and chemical properties which make it ideal for the repair of surface damage, & irregularities on most types of formwork.

Yield: 1.75Kg per Litre.



Size
2kg tub
8kg tub

Formwork Chemicals - Fillers, Sealers & Retarders

Adoseal - Polyurethane formwork sealer.

Single pack moisture curing polyurethane sealer. Brush applied to seal untreated timber formwork surface prior to mould release agent application.

7-9m² per litre, depending upon porosity



Size
1 Litre
5 Litre
25 Litre

Safetard Liquid - Top Face Surface Retarder



Spray applied liquid that retards the setting of the top surface of freshly placed concrete. The surface laitence can be brush/washed away the following day to produce an exposed aggregate finish.

Coverage: 5m² per litre



Size
5 Litre
25 Litre
210 Litre

Safetard Gel - Mould Applied Concrete Surface Retarder



Water based alternative to ADOTARD MF for use where H&S or environmental concerns prevail.

Covergae: 3-5m² per litre



Size
2kg Tub
8kg Drum

Column Formers & Collars

Disposable Formwork for rapid Construction of Circular Columns



Rapidobat is a purpose made spirally wound rigid paper tube of extremeley high quality. The tube is internally lined with a smooth faced plastic release sheet which provides the ultimate in concrete surface finish and appearance.

Rapidobat is the fast and economical solution to the problems of forming round columns. Complicated with timber formwork and expensive GRP or steel formwork.

Rapidobat is the one use disposable formwork system - so the number of columns cast per day is limited only by the number of Rapidobat tubes purchased.

Faster pouring programmes are the result, as well as consistent concrete quality - because all the columns can be potentially derived from the same mix.

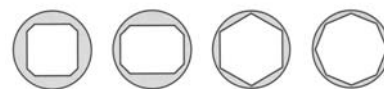
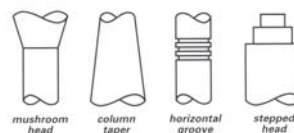
Standard Range shapes

Tube Internal Diameter	Tube wall thickness (mm)	Maximum Pour Height (m)
200	4.5	10.25
250	5.0	10.25
300	5.0	10.25
350	5.0	8.79
400	6.0	7.69
450	6.5	6.50
500	7.0	7.30
560	7.0	6.80
600	8.0	6.15
650	8.5	6.00
700	9.5	7.03
750	10.0	7.03
800	10.5	7.69
900	12.0	7.70
1000	13.5	7.65

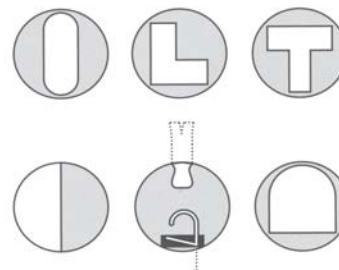
Advantages

- Provides the optimum fair face finish concrete column
- Fast and economical to use
- Very Strong
- Light and easy to handle
- Quick and easy to erect
- Requires no mould oil or release agent
- Stripped literally in seconds
- Delivered at short notice
- Manufactured in a large range of sizes
- Can be used for horizontal void forming.

Special Shapes



please ask for details of standard options for square, oblong, hexagon and octagon shapes.



Rapidobat