

Geosynthetics & Gas Protection

Geotextile	3
Underground Drainage Systems (SUDS)	4
Geogrids	4
Cellular Confinement Systems	4
Gabions & Mattresses	5
Porous Paving Systems	5
Weed Supression Fabric	5
Ground Heave & Polystyrene Products	6
Proctor Gas Membranes	7
Visqueen gas membranes	8-9
Fosroc Gas membranes	9
Bluebay Gas Systems	10-11
Monarflex Gas Systems	11
DPM's	12

Bluebay Woven Geotextiles

Bluebay woven geotextiles use a range of different polymers, weave patterns and strengths. There are 3 specific types available:

SG (Standard Grade), HS (High Strength), HF (High Flow)

Bluebay 609 Woven Geotextile

Bluebay 609 Geotextile is a general purpose geotextile, designed and manufactured to conform to the old Department of Transport Highways Specification for Road & Earthworks Separation. Bluebay 609 provides a cost effective solution for separation, support, reinforcement and filtration.



Applications

- Separating - access roads & areas of hard-standing
- Separating - granular fill from sub-soils and other fill layers
- Separating & Reinforcing- layers under new roads & car parks
- Separating & Reinforcing- layers under stone foundations
- Erosion Control - coastal defences

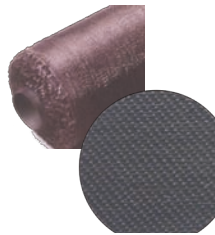
Technical Data

Bluebay 609	Size
Roll Width (m)	4.5
Roll Length (m)	100
Roll Weight (g/m ²)	73

Bluebay HS Woven (high strength)

Bluebay HS range of woven geotextiles is manufactured from high tenacity polyester yarns.

White in colour these reinforcing fabrics typically offer less than 2% creep after 2 years at a loading of 50% of maximum strength

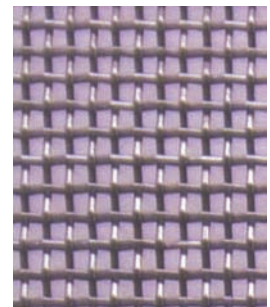


Bluebay HS	Size
Roll Width (m)	5.05
Roll Length (m)	100
Roll Weight (g/m ²)	285

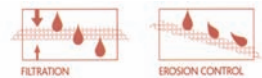


Bluebay HF Woven (high flow)

Bluebay HS range of woven geotextiles is manufactured from mono & multi filaments of polyester/polypropylene and is designed to provide high water through-flows with optimum particle retention.



Bluebay HF	Size
Roll Width (m)	5.15
Roll Length (m)	100
Roll Weight (g/m ²)	215



A full range of Bluebay geotextiles is available in all grades, please contact our technical sales department for further product information

Bluebay Non Woven Geotextiles

Bluebay Non Woven

Bluebay NW range of thermally bonded non woven geotextiles have been designed to offer optimum performance per weight. Their resulting mechanical robustness and excellent hydraulic properties make them the ideal choice for applications requiring separation and filtration.

The Bluebay NW standard range and in particular the superior non-woven range are ideally suited for use in membrane protection and coastal defenses due to their excellent puncture resistance and permeability properties.

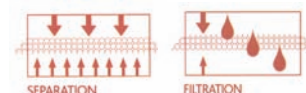


Applications

- Trench Drains
- Wrapping of attenuation units (SUDS)
- Wrapping of perforated drainage pipes
- Encapsulation of granular drainage blankets

Technical Data

Bluebay NW	Size
Roll Width (m)	4.5
Roll Length (m)	100
Roll Weight (g/m ²)	110



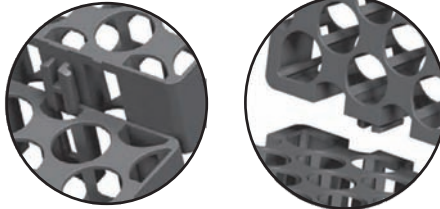
Bluebay Superior Non Woven

The Bluebay Superior non-woven range are manufactured by needle punching a web of high tenacity fibres to produce a consistent & uniform product of the highest performance. Available in weights from 120 to 800gsm. SNW products offer a combination of high water permeability and particle retention.

Bluebay Underground Drainage Systems (SUDS)

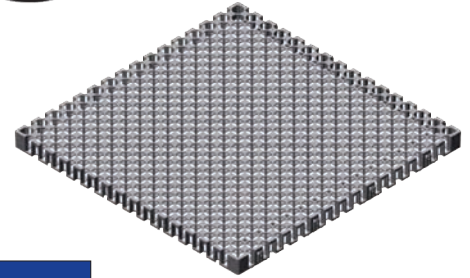
VersiCell is a tailor-made sustainable drainage solution which is a modular, interlocking sub-soil drainage system. VersiCell is a lightweight, high strength, plastic moulded structural panel that provides extremely efficient drainage due to a combination of substantial void areas and exceptional flow rate.

VersiCell system is simple to install and may be used for infiltration and attenuation control. The integral jointing clip ensures that there is a positive interlocking action between all panels whether used for sheet or tank constructions.



How VersiCell Works

Surging water is controlled when it enters the interlocking panel structure and is temporarily stored. When a permeable geotextile is used to envelope the panel structure, the stored water will gradually infiltrate into the surrounding ground, subject to soil permeability. If an impermeable geomembrane is used, the stored water will remain within the panel, structure until the outflow control is activated. modules and half modules.



Applications

- Green roof and landscaped decks
- Paved areas and roadways
- Sports fields
- Retaining/basement walls
- Pond filtration
- Bridge abutments
- Tunnels and landfills
- Golf courses

Advantages

- Design Flexibility - Greater design flexibility as the modules may be interlocked to form continuous large panels, conduits and tanks.
- Easy Installation - Large easy-to-join modules or pre-assembled panels allow rapid installation.
- Lightweight and High Strength
- Durable - modules are resistant to biological attack
- Efficient - High surface and internal void volume results in efficient drainage

Bluebay NON WOVEN & Superior NW geotextiles can be used with this SUDS system

Technical Data

VersiCell	Size
VersiCell 3050	500 x 500 x 30mm
VersiCell 3025	500 x 250 x 30mm
VersiCell 2050	500 x 500 x 20mm

Bluebay Geogrids

Bluebay Biaxial geogrids can solve pavement problems by providing omni-axial reinforcement to granular sub-bases, capping layers & railway ballasts in areas of weak or variable soils. E-grid Biaxial geogrids can be employed in single or multi-layers.

The tough platform created provides tremendous load dispersal, allowing previously weak soils to be reclaimed for development. Biaxial geogrids are available in standard and large aperture sizes to suit any fill material.



Applications

- Ground Stabilisation:
Under roads,
Railways
Ports & Paved Areas

Technical Data

Product	Size
Geogrid 20/20	4m x 50m
Geogrid 30/30	4m x 50m
Geogrid 40/40	4m x 50m

Other sizes are available upon request



Bluebay Cellular Confinement Systems

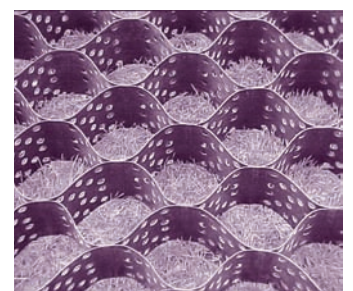
A three dimensional light weight and flexible mat made of high density polypropylene strips, ultrasonically bonded to form a honeycomb system.

A geosynthetic product that is highly effective in solving many problems associated with drainage, soil stability, and erosion control.

Available in four depths, 75mm, 100mm, 150mm & 200mm.

Applications

- Channel Protection
- Slope Protection
- Road Base Stabilisation
- Retaining Walls



Bluebay Gabions & Mattresses

Bluebay Welded Mesh Gabions and mattresses provide strong and aesthetically pleasing solutions to many of today's erosion control, protection and retaining structure problems.

Welded Mesh Gabions and mattresses are manufactured from 75mm x 75mm welded mesh.

Protective coating is either Triple life by the Galvan process or Fusion PVC coated by the Masterplax process. Gabions and mattresses are available in many different sizes to suit individual requirements.

Applications

- Retaining walls
- River Training
- Erosion Control
- Soil Conservation
- landscaping
- Protection of Structures
- Flood Protection



Bluebay Bluebay Porous Paving Systems

The Bluebay Porous Paving System is a cellular grass and gravel reinforcement grid which can be used for: Over Spill Car parks, emergency Access Lanes, Verge Reinforcement and Erosion Control.

The Bluebay Porous Paving System is lightweight and easy to assemble due to the simple interlocking system. No special tools are required. The product can follow odd shapes or profiles, and excess cells may be simply cut with pruning shears.

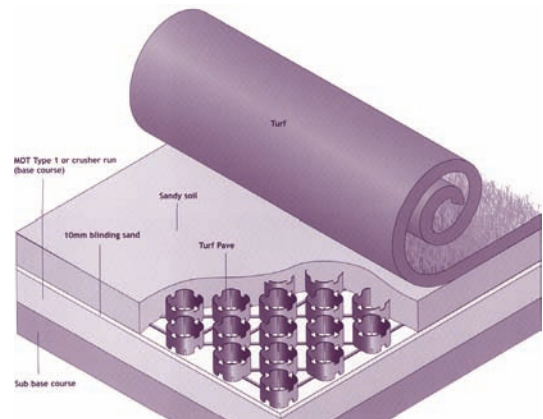
The strong and durable units form an integrated grid structure that is resistant to soil movement or shearing under pressure.

More than 90% of the grid base area is unrestricted, allowing turf roots to anchor to the base course below.

The high cells, when fitted with soil media, enhance vigorous turf root development. Notches in the cell walls allow grass runners and roots to grow without restriction.

Applications

- Over Spill Car Parks
- Emergency Access Lanes
- Verge Reinforcement
- Erosion Control
- Run-off volume reduction
- Flow attenuation
- Pollution prevention:



Bluebay Weed Supresion Fabric

WEED CONTROL WITHOUT CHEMICALS

CREATES A HEALTHY & FERTILE SOIL WHILST PREVENTING WEED GROWTH

Weed supresion fabric works by establishing a breathable membrane barrier through which weeds cannot penetrate.

Weed supresion fabric allows air and liquids through, creating a healthy fertile soil available only to your chosen plants.

Weed supresion fabric has a hydrophilic treatment allowing liquids to pass through Immediately.

The addition of a mulch is necessary to ensure the success of the weed supresion fabric. It serves 3 functions:

1. Shuts out the remaining light to stop growth under the weed supresion fabric.
2. Acts to protect from U.V. Light ensuring the weed supresion fabric has a long life.
3. Allows for landscaping to suit surrounding areas.

Area	Product	Benefits
Light transmivity	Less than 3.0% Insufficient light for plant growth	More effective product, Less mulch required, saving customer time and money
Application of product	Soft membrane follows contours of land	Much easier to apply for the user
Product structure	Even distribution of fibres	Guarantees no weeds will penetrate the membrane
Porosity	Hydrophilic treated so that liquids pass through immediately	Customers will not complain that the product has caused 'Puddling'
Need for chemicals	No need for any chemicals with weed supresion fabric	Weed supresion fabric will save time and money

Standard Roll Size: 1m x 15m
Other roll sizes available on request

Bluebay Ground Heave & Polystyrene Products

Clayshield EPS Polystyrene Sheets

Clayshield is the proven solution to protecting foundations against the effects of clay heave and soil movement on the side of deep trench foundations or the side and underside of ground beams.

Clayshield boards are manufactured from expanded polystyrene (EPS), a lightweight, closed cell system with excellent compressibility. The cells in the board contain air, which compress under the pressure of expanding, wet clay soils, acting as a buffer between the ground and the foundation.



Application	Position	Clayshield Product
Deep trench foundations	Side	Clayshield
Ground beams	Side / Underside	Clayshield
Ground beams	Underside	Castellated Clayshield / Clayshield
Piles	Encasement	Pile Collars

Property	Clayshield
Board size (mm)	2400 x 1200
Thickness (mm)	50, 75, 100, 200, 300
Effective Depth	Deep trenches up to 3m, ground beams up to 600mm
Colour	Light blue

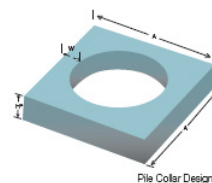
Castellated Clayshield

Castellated Clayshield is used to protect the underside of ground beams; Pile Collars and the innovative Clayshield Fixing Tool, which enables groundworkers to secure the protective boards in place while remaining outside the trench.

Property	Castellated Clayshield
Board size (mm)	1200 lengths, in widths to suit the trench
Thickness (mm)	100, 150, 200, 250
Colour	Light blue



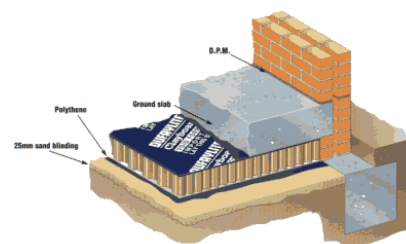
Pile Collars		
Diameter (mm)	W (mm)	A (mm)
300	50-150	400-600
400	50-150	500-700
500	50-150	600-800



Clayboard - Void Formation System

Clayboard® is unique, environmentally friendly void former and foundation stabiliser developed by Dufaylite. Clayboard® is a biodegradable honeycomb core set between lightweight polypropylene facings.

When dry, Clayboard® is strong enough to support the weight of wet concrete and steel reinforcement. Water is introduced to the Clayboard® core once the concrete is set, degrading the Clayboard® honeycomb centre which will ultimately lead to the creation of a void. This space will accommodate clay expansion without exerting undue pressure on the structure below. The resulting void continues to accommodate natural soil shrinkage & expansion.



Panel Size (mm)	Thickness (mm)
2440 x 1000	60 / 85 / 110 / 160

Polystyrene Void Formers

Polystyrene Void formers utilise the low weight/high strength characteristics of expanded polystyrene to provide the designer and contractor with a cost effective method of reducing the deadweight of a variety of structures:

Motorway Bridges, Basement Slabs, Pre-cast beams and Water Treatment Works

The voidformers are either cylindrical and generally moulded, or profiled and cut from expanded polystyrene block. The moulded cylinders are available in diameters ranging from 250 to 1050mm and the standard length is 2.4m. By glueing and cutting the profiles can be manufactured to suit engineers' requirements.

Polystyrene Sheets

Expanded Polystyrene sheets for thermal insulation of wall and ground floor slabs. Easily cut with fine tooth saw to the required size. Conforms to BS 3837: Part 1; and is BBA approved. Standard grade SD supplied from stock. Other grades readily available.

Sheet Size	Thickness
2.44 x 1.22m	25mm
2.44 x 1.22m	50mm
2.44 x 1.22m	75mm
2.44 x 1.22m	100mm
2.44 x 1.22m	150mm
Polystyrene Adhesive	310ml / 5 Litre

proctor **Protech SUPER Gas Membrane**

Protech Super reinforced gas membrane provides protection to buildings from the dangers associated with the ingress of Methane CH₄, Hydrocarbon Vapours, Carbon Dioxide CO₂ and or Radon, and complies with the recommendations in table 8.6 of Ciria C665 "Assessing Risks Posed by Hazardous Ground Gases to Buildings and BRE 212 for Radon applications.

Protech Super is a reinforced robust polyethylene membrane, incorporating an aluminium foil for maximum protection from methane. The Barrier is flexible and is easy to install, and is also suitable for use as a damp proof membrane.

Protech SUPER Gas membrane is a 1600 gauge loose laid, high performance proprietary reinforced polyethylene geomembrane manufactured from virgin polymer to resist high elongation, specifically designed for maximum protection against Methane, Carbon Dioxide, Hydrocarbon Vapours and Radon gas rising into a building from sub-floor areas.

Membrane comprises four layers consisting of a reinforcing scrim and 12 micron aluminium foil sandwiched between two layers of polyethylene film.

When laying all laps, joints and the like to be bonded with use of Probond cross linked butyl tape minimum girth 30mm. Service penetrations, columns, cloaks shall be sealed with the use of preformed tophats (pipe penetrations) or with 150mm girth Protech Self Adhesive Flashing Tape on two coats bitumen primer. Junctions with cavities and masonry should be sealed with use of Protech Gas Resistant DPC.



Technical Data

Product	Size
Roll Width	2m
Roll Length	25 & 50m
Roll Weight	18.5 & 37kg

Applications

- Independantly certified performance
- 4 Layer product designed for maximum gas protection
- Polyester reinforcing grid for puncture resistance during installation
- Loose laid system for ease of application
- Can be used on ground bearing floors or on suspended concrete or beam & block floors.

proctor **Gas Membrane Accessories**

Probond 30mm Tape

The probond tape is a cross linked butyl jointing tape for gas resistant membranes

Technical Data

Typical Properties	Size
Roll Width	30mm
Roll Length	30m

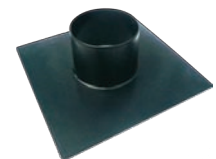


Probond Preformed Tophats

Tophats should be used to seal pipe penetrations. They are available in a range of standard sizes. Custom sizes can also be made to suit your requirements.

Technical Data

Typical Properties	Size
To suit pipes	55/110 & 160mm



Texself GS

Texself GS is a gas resistant self adhesive membrane for tanking basements & lift pits.

Technical Data

Typical Properties	Size
Roll Width	1m
Roll Length	15m



Protech GR DPC

GR DPC 600 is a gas resistant DPC for bridging cavities and masonry

Technical Data

Typical Properties	Size
Roll Width	600mm
Roll Length	20m



Protech Flashing

Protech flashing is a self adhesive gas resistant membrane for sealing around columns & stanchions. It can also be used to seal the flap on our gas resistant membranes

Technical Data

Typical Properties	Size
Roll Width	150 / 300mm
Roll Length	10m



VISQUEEN GAS BARRIER

Visqueen Gas Barrier is a multi layer reinforced polyethylene membrane with an integral aluminium foil. For ease of identification on site Visqueen Gas Barrier is coloured blue tint on one side and silver on the reverse.



The Barrier is flexible and is easy to install. Visqueen Gas Barrier is also suitable for use as a damp proof membrane.

Advantages

- Multi Layer Reinforced LDPE Membrane with Aluminium core.
- High resistance to puncture.
- Low permeability to methane, radon and carbon dioxide.
- Also acts as a damp proof membrane.
- High levels of tear and impact resistance

Technical Data

Product	Size
Roll Width	1.6m
Roll Length	30 & 60m
Roll Weight (m ²)	350gsm

VISQUEEN RADON MEMBRANE

Independently Accredited by BRE Certification Ltd (Certificate Number 083/01) Visqueen Radon Membrane is an unreinforced polyethylene membrane, suitable for use in the protection of buildings from the ingress of Radon gas.



Visqueen Radon Membrane will act as an effective passive radon membrane in most typical applications when installed in accordance with our instructions and will also act as a Damp Proof Membrane.

Advantages

- Accredited by BRE Certification Ltd
- Prevents the ingress of Radon gas
- High resistance to puncturing & tearing

Technical Data

Product	Size
Roll Width	4.0m
Roll Length	25.0m
Roll Weight	27.6kg

VISQUEEN CO2 GAS MEMBRANE

Visqueen CO2 Gas membrane offers a safe solution for the protection of buildings against carbon dioxide, when installed in accordance with BRE Report: 414 "Construction of buildings on gas contaminated land".



Visqueen CO2 is a high quality blended co-polymer membrane; for ease of identification on site the membrane is coloured yellow. The Barrier is flexible and is easy to install, and is also suitable for use as a damp proof membrane.

Advantages

- High quality robust Polyethylene based Membrane
- High resistance to puncture
- Low permeability to carbon dioxide

Technical Data

Product	Size
Roll Width	4.0m
Roll Length	25.0m
Roll Weight	27.6kg

VISQUEEN GAS SAM

Visqueen Gas Resistant (GR) Self Adhesive Membrane is designed to prevent the transmission of carbon dioxide, radon and methane gases in tanking applications or where hydrostatic pressure is present. This is in addition to the products usage as a damp proof membrane.



Resistance to gas is achieved by an integral aluminium film. Visqueen Gas Resistant (GR) Self Adhesive Membrane should be used along with Visqueen Tanking Primer Solution, providing the optimum surface to receive the (GR) Self Adhesive Membrane.

Advantages

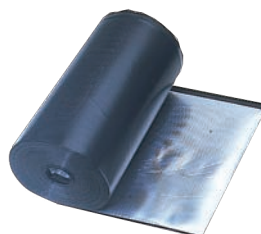
- Part of the Visqueen Gas Barrier system.
- Integral aluminium foil for Gas resistance.
- Tough HDPE polyethylene membrane provides resistance to puncture and tearing.

Technical Data

Product	Size
Roll Width	1.0m
Roll Length	20m
Roll Weight	26kg

VISQUEEN GR DPC

Visqueen Gas Resistant (GR) Damp Proof Course is a flexible polyethylene DPC with an aluminium foil designed to prevent the transmission of carbon dioxide, radon and methane gases.



This is in addition to the products usage as a damp proof course. Resistance to carbon dioxide, radon and methane is achieved by an integral aluminium film.

Advantages

- Integral aluminium foil for gas resistance.
- Easy to apply using traditional methods.
- Use with Visqueen Gas Resistant (GR) Membrane for complete integrity.

Technical Data

Product	Size
Roll Width	0.3 - 1.0m
Roll Length	30m
Roll Weight (m ²)	0.5kg

VISQUEEN RADON SUMP

Visqueen Radon Sumps are for use in full protection areas, where sub floor depressurisation may be required. A sump is only installed initially as a fall back measure and does not offer radon removal until a fan is installed or it is connected to a passive stack system.



Applications

- Strong & Robust
- Easy to Install
- Part of the Visqueen Radon Protection
- System Independently assessed

Technical Data

Product	Size
Radon Sump Unit	430 x 430 x 220mm

VISQUEEN TOPHAT UNITS

Visqueen Top Hat Units are used to provide an effective seal around service pipe penetrations. They are available in a range of sizes.



Applications

- Provides effective seal around service pipe penetrations

Technical Data

Product	Size
Top Hats	110 & 160mm

VISQUEEN GAS JOINTING SYSTEM

Visqueen Gas Barrier Jointing Tape is a double sided butyl based jointing tape. The use of a single release paper assists ease of application on site.

Visqueen Gas Barrier Jointing Tape is suitable for use in the lapping and sealing of Visqueen Gas Barrier.

This tape is a single sided tape which provides added security against any potential leakage path. Always ensure that the membrane is clean and dry at the time of installation.



Applications

- A comprehensive system for ensuring integrity of Visqueen Gas Barrier laps and joins
- Visqueen Double Sided Jointing Tape for sealing laps.
- Visqueen Foil Backed Girth Jointing Tape for added security.
- Visqueen Top Hat Units where Visqueen Gas Barrier is punctured by service pipes.

Technical Data

Product	Size
Dbl Sided Jointing Tape	10m x 50mm
Foil Backed Girth Tape	50m x 75mm



Proofex Total

High performance, totally gas-impervious, reinforced membrane

Reinforced gas membrane designed to protect buildings and their occupants from the effects of methane, radon, carbon dioxide and other harmful gases. Like conventional ground membranes, Proofex Total also acts as a damp proof membrane to help protect the building against the ingress of moisture from the ground.



Advantages

- Independently certified performance, BBA certificate no.01/3850.
- 6-layer product design for maximum gas protection.
- Polyester reinforcing grid for puncture resistance during application.
- Loose-laid system for ease of application.
- Can be used on ground-bearing concrete floors and beam/block floors.
- Can be used to form a cavity tray, no need for a separate product.



Technical Data

Product	Size
Roll Width (m)	2.0
Roll Length (m)	25
Roll Weight (kg)	22



Proofex Radon Barrier

High performance, gas-impervious, reinforced membrane

Gas membrane designed to protect buildings and their occupants from the effects of radon, carbon dioxide and other harmful gases. Like conventional ground membranes, Proofex Radon Barrier also acts as a damp-proof membrane to help protect the building against the ingress of moisture from the ground.

Applications

- Virgin co-polymer product design for maximum gas protection.
- Loose-laid system for ease of application.
- Can be used on ground-bearing concrete floors and beam/block floors.



Technical Data

Product	Size
Roll Width (m)	4.0
Roll Length (m)	20
Roll Weight (kg)	28.48

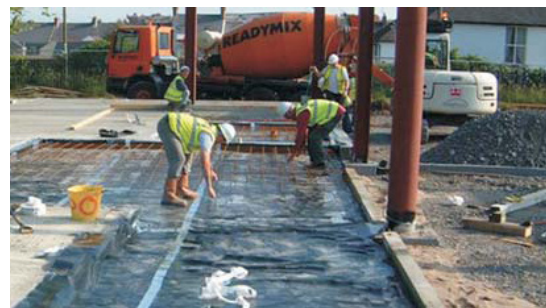
Bluebay Gas Barrier System



Bluebay Gas Barrier offers total protection from methane and carbon dioxide when designed and installed in accordance with BRE Report Part 212 (Methane) & Part 414 (Housing on contaminated sites).

Bluebay Gas Barrier is also a fully effective damp proof membrane.

Bluebay Gas Barrier is a four layer, reinforced, totally gas impermeable membrane comprising an aluminium foil layer and a polyester reinforcing grid sandwiched between two layers of polythene film.



Advantages

- 4 Layer product designed for maximum gas protection
- Polyester reinforcing grid for puncture resistance during installation
- Loose laid system for ease of application
- Can be used on ground bearing floors or on suspended concrete or beam & block floors.

Technical Data

Product	Size
Roll Width	2.0m
Roll Length	25 / 50m
Roll Weight	18.5 / 37kg

Bluebay Gas Barrier Accessories



Product	Description	Sizes	Application	Supply
Foil Backed Jointing Tape	Single sided tape for securing laps & joins	75mm	Securing Laps & Joins	50m Rolls
Double sided Bitumen Tape	Bitumen Adhesive Tape	Various	Butyl based double sided tape for joins and laps	Rolls
Top Hats	Polymeric	Various	For sealing around penetrations through gas membrane	Each
Gas Resistant DPC	A flexible polyethylene DPC with an aluminium foil	All widths	To prevent the transmission of Radon & Methane gases	20m Rolls
Radon Sump Units	Part of the Bluebay Radon Protection System	430 x 430 x 220mm	Radon Sumps are for use in full protection areas, where sub floor depressurisation may be required.	Each

Bluebay Self Adhesive Gas Membrane

Bluebay Self Adhesive Gas Membrane is designed to prevent the transmission of carbon dioxide, radon and methane gases in tanking applications or where hydrostatic pressure is present. This is in addition to the products usage as a damp proof membrane.

The product is a tough, durable, selfadhesive sheet with an overall thickness of 1.5 mm. Resistance to gas is achieved by an integral aluminium film. Bluebay Self Adhesive Membrane should be used along with the Bluebay Primer Solution, providing the optimum surface to receive the Self Adhesive Membrane.



Product	Description	Sizes	Application	Supply
Bluebay Gas Membrane	Self Adhesive Membrane	1mm x 1.05mm x 28.6m	SA membrane which protects against Methane & Radon gases	30m ² Rolls
Dbl sided Bitumen Tape	Bitumen Adhesive Tape	75, 100, 150 & 300mm	Protection board adhesive	15m Rolls
Bluebay XL Tape	Reinforcing Tape	100, 150 & 300mm wide	overband tape for DPM & Membrane	20m Rolls
Bluebay Primer	Liquid Primer (black)	5 & 25 Ltr	To prime surfaces before installing membranes	5 & 25Ltr
Bluebay Protection Boards	Polymeric Protection Boards	3mm thick	For heavy duty use	2m x 1m
	Bitumen Protection Board	3mm thick	For heavy duty use	2.13m x 1.22m

Bluebay Radon Barrier

Bluebay Radon Membrane is an unreinforced polyethylene membrane, suitable for use in the protection of buildings from the ingress of Radon gas.

Bluebay Radon Membrane will act as an effective passive radon membrane in most typical applications when installed in accordance with our instructions and will also act as a Damp Proof Membrane.



Advantages

- Prevents the ingress of Radon gas
- High resistance to puncturing & tearing

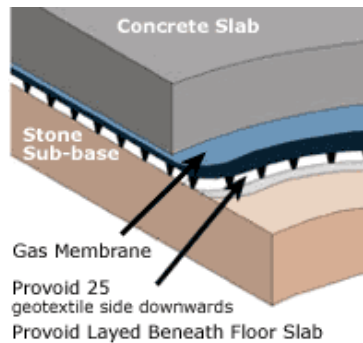
Technical Data

Product	Size
Roll Width	4.0m
Roll Length	25.0m
Roll Weight	27.6kg

Bluebay Gas Venting System

Gas Venting System is a single cusped geocomposite comprising of a pre-formed HDPE core with a bonded non-woven needle punched geo-textile filter fabric, specifically designed as a primary venting layer.

The venting system should be used on any site where a sub-slab gas venting system is required in a building development. As the primary part of any gas venting system, it needs to be connected to the required amount of air inlets and outlets. The gas system is sufficiently able to vent harmful gases from the underside of a building, when used in conjunction with an appropriate gas resistant membrane.



Technical Data

Product	Size
Roll Width	1.0m
Roll Length	50.0m
Thickness	12 / 25mm

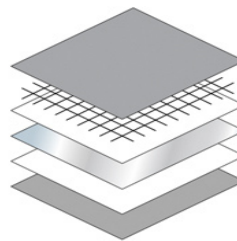
A full range of Gas Venting System Components are available on request.



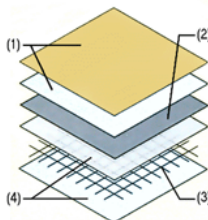
Monarflex RAC

RAC gas-resistant membrane is a 900 µm thick, ten layer, polyethylene membrane incorporating encapsulated aluminium foil and a reinforcing grid.

The membrane is grey, with a smooth finish. Both gas barriers have methane transmission rates below the limit of detection.



- (1) Extruded Low Density Polyethylene
- (2) Aluminium Foil
- (3) Polyester Grid
- (4) Blown Low Density Polyethylene



Monarflex Reflex Super

Reflex Super is a 400 µm thick, seven layer, polyethylene membrane incorporating encapsulated aluminium foil and a reinforcing grid.

The membrane is sand coloured on the top and silver on the underside with a ribbed finish. Monarflex Reflex Super has methane transmission rates below the limit of detection.

Monarflex Ultra DPM

Monarflex Ultra is a high performance damp proof membrane, it has been specifically designed to withstand the rigours of a busy building site.

Ultra D.P.M. is very resistant to tearing and puncture, it is constructed from two layers of virgin polyethylene reinforced by a grid of high density polyethylene.

Ultra D.P.M. can be specified with confidence: when properly installed it will provide an effective, maintenance free damp proof membrane.

Technical Data

Product	Size
Monarflex RAC	2m x 25m Roll

Applications

- Most robust gas barrier available.
- Provides protection from carbon dioxide, methane & other volatile organic compounds
- Aluminium foil separated from reinforcing

Technical Data

Product	Size
Reflex Super	2m x 25m Roll

Applications

- Robust weldable gas retardant membrane for protection from methane, carbon dioxide or high concentrations of radon.
- Aluminium foil separated from reinforcing.
- Tested by the BBA and awarded certificate 00/3668

Technical Data

DPM	250	300
Nominal Thickness	250µm	300µm
Roll Length	25m	25m
Roll Width	4m	4m

VISQUEEN ECOMEMBRANE 100% RECYCLED

Visqueen EcoMembrane® DPM is a blown film of extruded low-density polyethylene for use as a Type "A" damp proof membrane as defined by BS EN 13967: 2004.

It is manufactured from 100% post-use waste, is black in colour and available in 250mu, 300mu and 500mu thicknesses. It has been independently accredited by BRE Certification Ltd (Certificate No. 112/04) copies available on request.

Visqueen EcoMembrane® DPM is chemically inert and is not affected by acids and alkalis that may be present in the sub-soils..



Technical Data			
DPM	250	300	500
Nominal Thickness	250mu	300mu	500mu
Gauge	1000	1200	2000
Roll Length	25m	25m	12.5m
Roll Width	4m	4m	4m
Min Roll Weight	23Kg	27.6Kg	23Kg

Advantages

- Manufactured from 100% post-use polyethylene
- High tear resistance helps reduce damage during installation.
- Does not compromise on traditional DPM performance.
- Same sizes and thicknesses & installed in the same way.

VISQUEEN DPM TO PIFA STANDARD

Visqueen Damp Proof Membranes are a high quality range of polyethylene Damp Proof Membranes, available in Blue or Black and produced to PIFA Standard 6/83A:1995.

Manufactured from high quality reprocessed low density polyethylene (LDPE) Visqueen Damp Proof Membranes have successfully prevented moisture penetration from floors for many years.

Visqueen Damp Proof Membranes comply with the relevant Building Regulations. Visqueen Damp Proof Membranes should be used in conjunction with the Visqueen Jointing System to ensure complete integrity of joints.



Technical Data			
DPM	250	300	500
Nominal Thickness	250mu	300mu	500mu
Gauge	1000	1200	2000
Roll Length	25m	25m	12.5m
Roll Width	4m	4m	4m
Min Roll Weight	23Kg	27.6Kg	23Kg

Advantages

- High puncture resistance.
- Withstands rough site handling.
- Comprehensive range.
- Same sizes and thicknesses & installed in the same way.

Bluebay Polythene DPM

Bluebay Damp Proof Membranes are a high quality range of polyethylene Damp Proof Membranes, available in Blue, Black or clear and produced to PIFA Standard 6/83A:1995.

Manufactured from high quality recycled polyethylene for use in solid concrete ground floors to protect buildings against water from the ground providing an effective barrier against liquid or water vapour for the lifetime of the concrete slab in which they are installed.

We supply both B.B.A & P.I.F.A standards



Technical Data			
Sheet Thickness	Sheet Size	Sheet Colour	Product Pallet Size
500mu	4 x 12.5	Blue	40
500mu	4 x 12.5	Black	40
500mu	2 x 25	Blue	40
500mu	2 x 25	Black	40
300mu	4 x 25	Black	40
300mu	4 x 25	Blue	40
250mu	4 x 25	Black	40
250mu	4 x 25	Blue	40
250mu	4 x 25	Clear	40
125mu	4 x 50	Black	40
"Handypack" BBA Certified DPM polythene film			
250mu	4 x 25	Blue	
Orange Flame Retardant Polythene			
250mu	4 x 25	Orange	40
Polythene Jointing Tape			
N/A	100mm x 33m	Yellow	N/A