



Introducing the CETCO range of Active Waterproofing Systems

Bluebay are the specialist partner of the Cetco range of Active Waterproofing Systems which includes the Voltex Bentonite system that utilises the unique, high-swelling properties of sodium bentonite. This is a clay of volcanic origin with the ability of swelling many times its dry volume when in contact with water. In a confined state this forms a dense, impenetrable gel, that completely locks water and vapour out.

Some of the benefits of the Voltex Waterproofing System include:

- **Cost-effective:** Compared to traditional waterproofing methods (reduced detailing; ancillary products; installation time/labour costs)
- **Durability:** Can be installed in all weather conditions, has self-healing/sealing properties and has excellent peel-adhesion/self-bonding to concrete
- **Easy Installation:** Minimal preparation & no requirements for primers, adhesives, seam tapes, pre-formed section or protection boards
- **Flexibility:** Can be fixed to almost any background including rock and various piles
- **Conformity:** To BS 8102: 2009 (Type A, all Grades)
- **Project services includes:** feasibility study, independent project-specific technical advice, design guidance/technical drawings, on-site installation training & site inspections, as well as back up from the in-house R&D department
- Full system warranty available
- **Proven technology:** BBA Certified (86/1650) CE marked, NHBC & BRE Compliant
- ISO 9001 & 14001 accredited Millions of square metres have been successfully installed worldwide
- **Green System:** Sodium Bentonite is a naturally occurring clay and the Voltex system leaves minimal waste
- **Complete Solution:** When hydrated provides an effective Radon and Methane Barrier.

Specialist distributor of
CETCO

Our range of CETCO products includes:

VOLTEX / VOLTEX DS

Tanking systems

WATERSTOP RX101

Sodium bentonite based waterstop

BENTONITE GRANULES

Used for extra Volclay protection

BENTOSEAL PASTE

Bentonite based mastic

COREFLEX® XP

Thermoplastic waterproofing system

ULTRASEAL® XP

Polymer waterproofing system

VOLDRAIN 8mm

Sub-surface studded HDPE drainage composite with non-woven polypropylene geotextile filter fabric

VOLSEAL 200

Surface-applied cementitious waterproofing by crystallisation

VOLSEAL 250

Cementitious flexible waterproofing coating

To view our full range visit
www.bluebaybp.co.uk





Bentonite Specialist Technical Support

Specialist distributor of
CETCO

Expert Advice

At the design stage we can arrange technical support, project specific Auto CAD design details and advice on quantities. Once the construction phase commences we can arrange comprehensive on-site training. Regular site inspections ensure that 'specialist applicators' are not required.

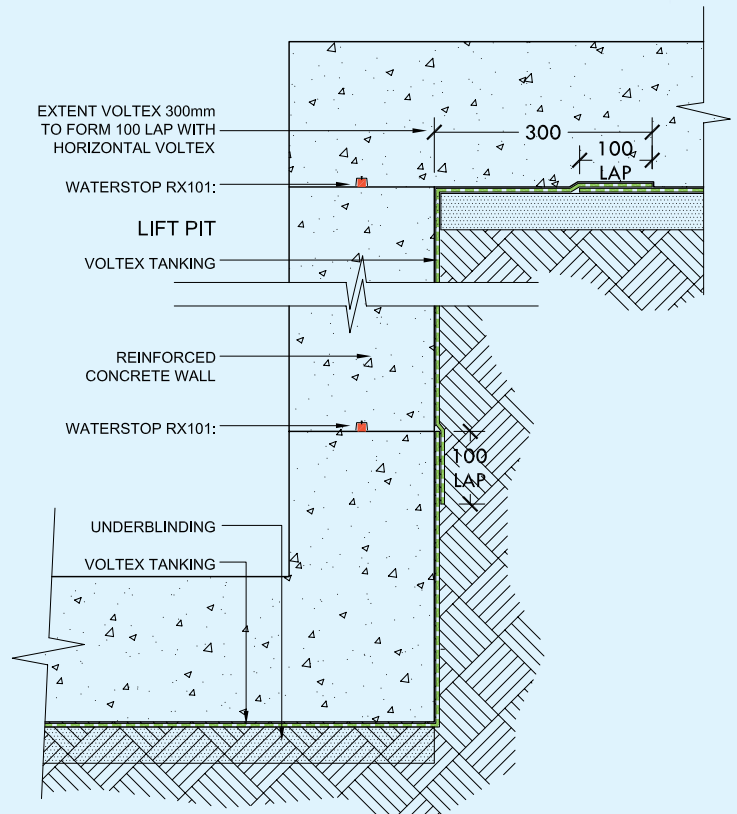
Re-Specification

Bluebay is able to re-specify the full range of Cetco alternative waterproofing systems in lieu of other manufacturers' products. Full technical assistance and supporting information is provided as necessary.

Bluebay offer a comprehensive range of specialist Civil Engineering & Construction Products delivered nationwide from our network of branches.

Call us today for a quotation!

Visit www.bluebaybp.co.uk for more information



Bluebay West & Wales

Unit 51, Portmanmoor Road Industrial, Estate, Ocean Park, Cardiff, CF24 5HB

☎ 02920 495555

📠 02920 491700

✉ cardiff@bluebaybp.co.uk

Bluebay London & S.E.

Unit 3, Stadium Ind Est, Cradock Road, Luton, Bedfordshire, LU4 0JF

☎ 01582 594007

📠 01582 594009

✉ london@bluebaybp.co.uk

Bluebay Thames Valley

Unit 26A, Ganton Way, Techno Trading Estate, Swindon, Wilts, SN2 8EZ

☎ 01793 512299

📠 01793 535888

✉ swindon@bluebaybp.co.uk

Bluebay North & Scotland

Unit 16G, Follingsby Park, Gateshead, Tyne and Wear, NE10 8YF

☎ 0191 416 6572

📠 0191 416 8614

✉ gateshead@bluebaybp.co.uk

Bluebay North West & E. Midlands

Unit 2A & 2B, New Cut Lane Ind Est, Warrington, WA1 4AG

☎ 01925 875588

📠 01925 819559

✉ warrington@bluebaybp.co.uk